



TEL: (517) 546-3220

# ETA-X RAIL

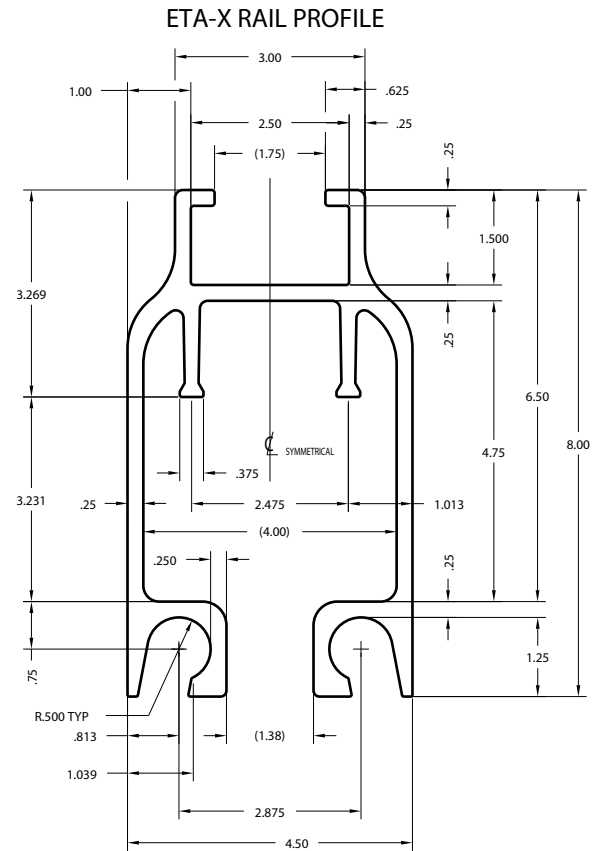


**THE SHAPE OF THINGS TO COME**



	Page
ETA-X Rail Features.....	3
ETA-X Live Load Deflections.....	4
ETA-X End Truck Assemblies.....	5
ETA-X Bridge Transfer Rail.....	15

## UNIFIED INDUSTRIES NEW ETA-X RAIL



### Features

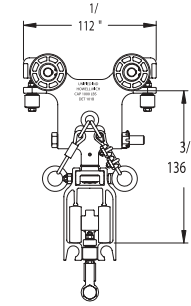
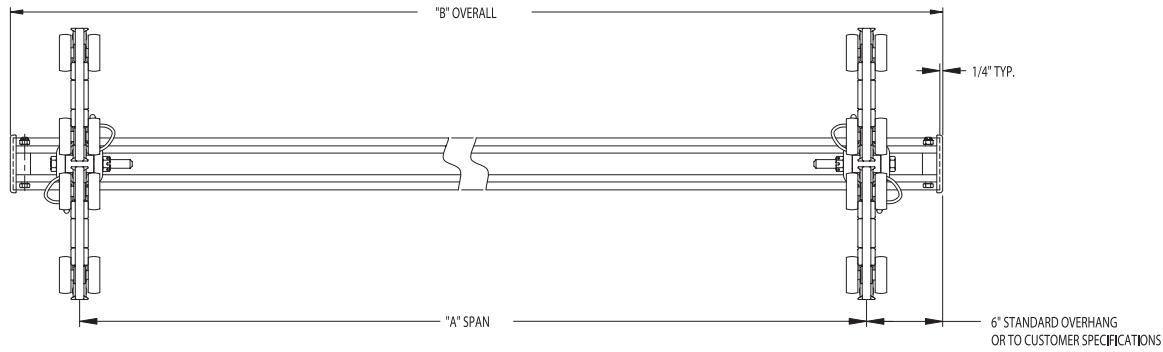
- X-TRA Strength
- Increased Capacity
- Built-in Anti-Kick Up Feature
- Extended Spans
- Uses Existing ETA-8 Accessories
- Splices to Existing ETA-8 Rail System



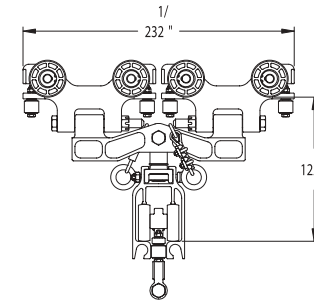
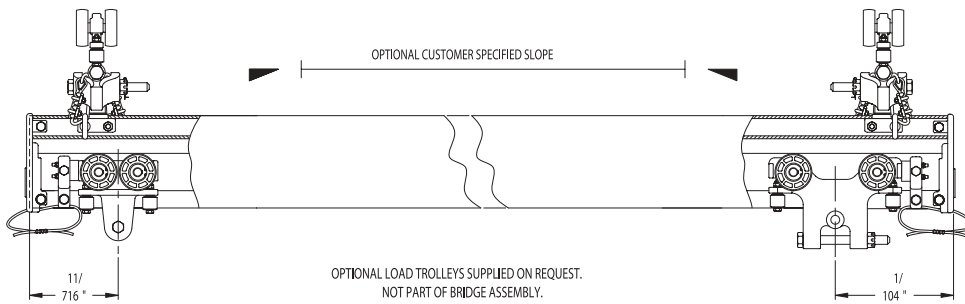
Span in Ft.	Deflection Limit		Point Load @ Center of Span (lbs)			
			ETA-X		ETA-X + C6 @ 3.63	
	1/450	1/550	1/450	1/550	1/450	1/550
5	0.1333	0.1091	14410	11785	26907	22008
6	0.1600	0.1309	9992	8169	18666	15264
7	0.1867	0.1527	7326	5987	13694	11195
8	0.2133	0.1746	5594	4568	10464	8551
9	0.2400	0.1964	4404	3594	8248	6736
10	0.2667	0.2182	3552	2896	6660	5435
11	0.2933	0.2400	2920	2377	5483	4471
12	0.3200	0.2618	2437	1982	4586	3736
13	0.3467	0.2836	2061	1672	3887	3162
14	0.3733	0.3054	1761	1426	3330	2705
15	0.4000	0.3273	1518	1226	2879	2335
16	0.4267	0.3491	1318	1061	2509	2031
17	0.4533	0.3709	1151	924	2201	1777
18	0.4800	0.3927	1010	808	1942	1564
19	0.5067	0.4146	890	708	1721	1382
20	0.5333	0.4364	787	623	1532	1225
21	0.5600	0.4582	697	548	1367	1090
22	0.5867	0.4800	619	483	1224	971
23	0.6133	0.5018	550	425	1098	866
24	0.6400	0.5236	489	375	986	774
25	0.6670	0.5454	433	238	887	691
26	0.6938	0.5672	384	286	798	617
27	0.7207	0.5890	339	249	718	550
28	0.7475	0.6108	299	215	645	489
29	0.7744	0.6326	262	184	580	434
30	0.8012	0.6544	228	155	520	383

Sectional Properties		
Area (in. sq.)	7.8	9.953
Ix	48.75	85
Iy	22	31.9





**B-520**  
(22041)  
SINGLE CARRIER END TRUCK  
1000 LBS. (448 Kgs) RATED LOAD



**A-530**  
(22051)  
DUAL CARRIER END TRUCK  
2000 LBS. (896 Kgs) RATED LOAD

"A" SPAN		"B" OVERALL		RATED LOAD		TEST LOAD		TOTAL WEIGHT	
2'-0"	609.6 mm	3'-0"	914.4 mm	2000 LBS.	907 Kgs	2500 LBS.	1134 Kgs	73 lbs.	33.1 Kgs
3'-0"	914.4 mm	4'-0"	1219.2 mm	2000 LBS.	907 Kgs	2500 LBS.	1134 Kgs	82 lbs.	37.2 Kgs
4'-0"	1219.2 mm	5'-0"	1524.0 mm	2000 LBS.	907 Kgs	2500 LBS.	1134 Kgs	91 lbs.	41.3 Kgs
5'-0"	1524.0 mm	6'-0"	1828.8 mm	2000 LBS.	907 Kgs	2500 LBS.	1134 Kgs	100 lbs.	45.4 Kgs
6'-0"	1828.8 mm	7'-0"	2133.6 mm	2000 LBS.	907 Kgs	2500 LBS.	1134 Kgs	109 lbs.	49.4 Kgs
7'-0"	2133.6 mm	8'-0"	2438.4 mm	2000 LBS.	907 Kgs	2500 LBS.	1134 Kgs	118 lbs.	53.5 Kgs
8'-0"	2438.4 mm	9'-0"	2743.2 mm	2000 LBS.	907 Kgs	2500 LBS.	1134 Kgs	127 lbs.	57.6 Kgs
9'-0"	2743.2 mm	10'-0"	3048.0 mm	2000 LBS.	907 Kgs	2500 LBS.	1134 Kgs	136 lbs.	61.7 Kgs
10'-0"	3048.0 mm	11'-0"	3352.8 mm	2000 LBS.	907 Kgs	2500 LBS.	1134 Kgs	145 lbs.	65.8 Kgs
11'-0"	3352.8 mm	12'-0"	3657.6 mm	2000 LBS.	907 Kgs	2500 LBS.	1134 Kgs	154 lbs.	69.9 Kgs
12'-0"	3657.6 mm	13'-0"	3962.4 mm	1981 LBS.	898 Kgs	2476 LBS.	1123 Kgs	163 lbs.	73.9 Kgs
13'-0"	3962.4 mm	14'-0"	4267.2 mm	1672 LBS.	758 Kgs	2090 LBS.	948 Kgs	172 lbs.	78.0 Kgs
14'-0"	4267.2 mm	15'-0"	4572.0 mm	1425 LBS.	646 Kgs	1781 LBS.	808 Kgs	181 lbs.	82.1 Kgs
15'-0"	4572.0 mm	16'-0"	4876.8 mm	1225 LBS.	555 Kgs	1531 LBS.	694 Kgs	190 lbs.	86.2 Kgs
16'-0"	4876.8 mm	17'-0"	5181.6 mm	1061 LBS.	481 Kgs	1326 LBS.	601 Kgs	199 lbs.	90.3 Kgs
17'-0"	5181.6 mm	18'-0"	5486.4 mm	924 LBS.	419 Kgs	1155 LBS.	524 Kgs	208 lbs.	94.3 Kgs
18'-0"	5486.4 mm	19'-0"	5791.2 mm	807 LBS.	366 Kgs	1009 LBS.	457 Kgs	217 lbs.	98.4 Kgs
19'-0"	5791.2 mm	20'-0"	6096.0 mm	708 LBS.	321 Kgs	885 LBS.	401 Kgs	226 lbs.	102.5 Kgs
20'-0"	6096.0 mm	21'-0"	6400.8 mm	623 LBS.	282 Kgs	779 LBS.	353 Kgs	235 lbs.	106.6 Kgs

"A" SPAN		"B" OVERALL		TOTAL WEIGHT	
2'-0"	609.6 mm	3'-0"	914.4 mm	51 lbs.	23.1 Kgs
3'-0"	914.4 mm	4'-0"	1219.2 mm	60 lbs.	27.2 Kgs
4'-0"	1219.2 mm	5'-0"	1524.0 mm	69 lbs.	31.3 Kgs
5'-0"	1524.0 mm	6'-0"	1828.8 mm	78 lbs.	35.4 Kgs
6'-0"	1828.8 mm	7'-0"	2133.6 mm	87 lbs.	39.5 Kgs
7'-0"	2133.6 mm	8'-0"	2438.4 mm	96 lbs.	43.5 Kgs
8'-0"	2438.4 mm	9'-0"	2743.2 mm	105 lbs.	47.6 Kgs
9'-0"	2743.2 mm	10'-0"	3048.0 mm	114 lbs.	51.7 Kgs
10'-0"	3048.0 mm	11'-0"	3352.8 mm	123 lbs.	55.8 Kgs
11'-0"	3352.8 mm	12'-0"	3657.6 mm	132 lbs.	59.9 Kgs
12'-0"	3657.6 mm	13'-0"	3962.4 mm	141 lbs.	64.0 Kgs
13'-0"	3962.4 mm	14'-0"	4267.2 mm	150 lbs.	68.0 Kgs
14'-0"	4267.2 mm	15'-0"	4572.0 mm	159 lbs.	72.1 Kgs
15'-0"	4572.0 mm	16'-0"	4876.8 mm	168 lbs.	76.2 Kgs
16'-0"	4876.8 mm	17'-0"	5181.6 mm	177 lbs.	80.3 Kgs

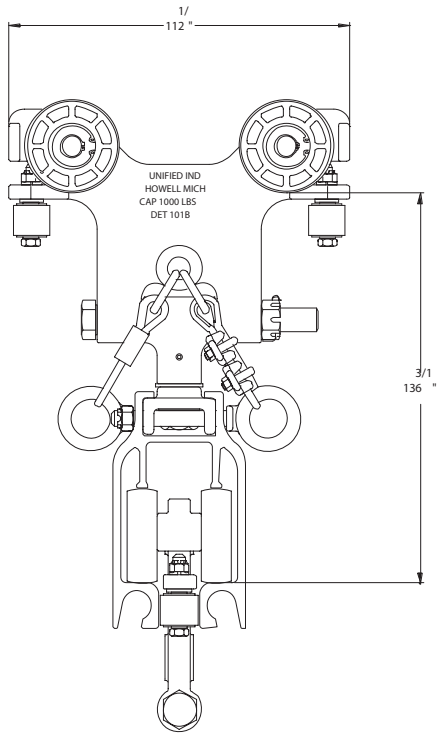
RATED LOAD: BASED UPON STATIC LOAD TESTING, CARRYING CAPACITY OF HIGH IMPACT NYLON WHEELS AND ALSO A BRIDGE GIRDER DEFLECTION OF 1/550.

TEST LOAD: SHALL NOT BE MORE THAN 125% OF THE RATED LOAD UNLESS RECOMMENDED BY THE MANUFACTURER. CRANE SHALL NOT BE LOADED BEYOND IT'S RATED LOAD CAPACITY EXCEPT FOR TEST PURPOSES.

TOTAL WEIGHT: FOR BRIDGE CRANE ASSEMBLIES INCLUDING END TRUCK TROLLEYS. EXCLUDING LOAD SUSPENSION TROLLEYS.

NOTE: DIAGONAL BRACING ON BRIDGE CRANE MAY BE NECESSARY FOR CERTAIN APPLICATIONS.

VALUES CONFORM WITH O.S.H.A. DEPT. OF LABOR FEDERAL REGULATIONS CODE. FEDERAL REGULATIONS CODE WAS REVISED AS OF JULY 1, 1984.

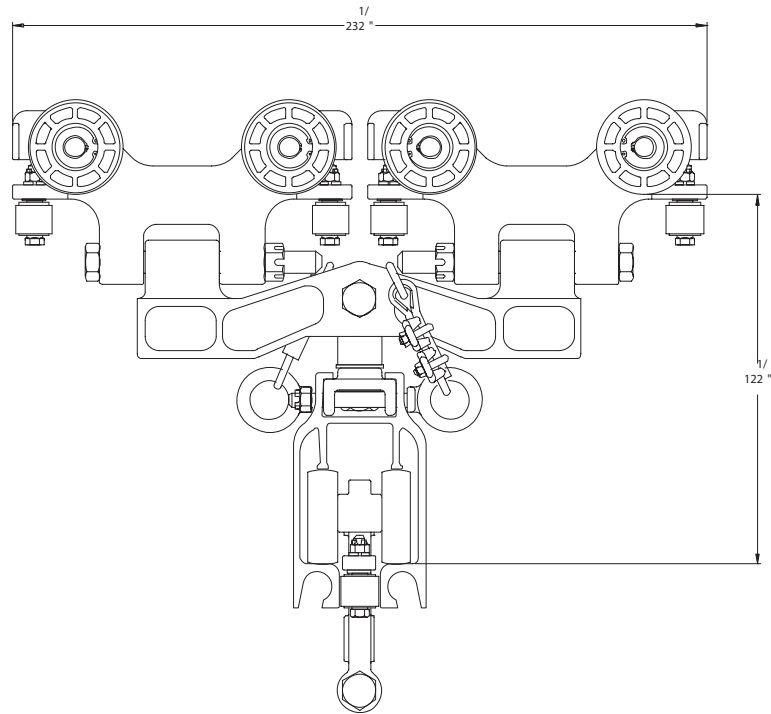


**B-520 STANDARD END TRUCK**

(22041)

SINGLE TROLLEY END TRUCK CARRIER AT EACH END OF CRANE GIRDER.  
 RATED LOADS OF 1000 LBS. (448 KGS)  
 SINGLE GIRDER BRIDGE CRANE UP TO 12'-0"

[3657.6] SPAN.

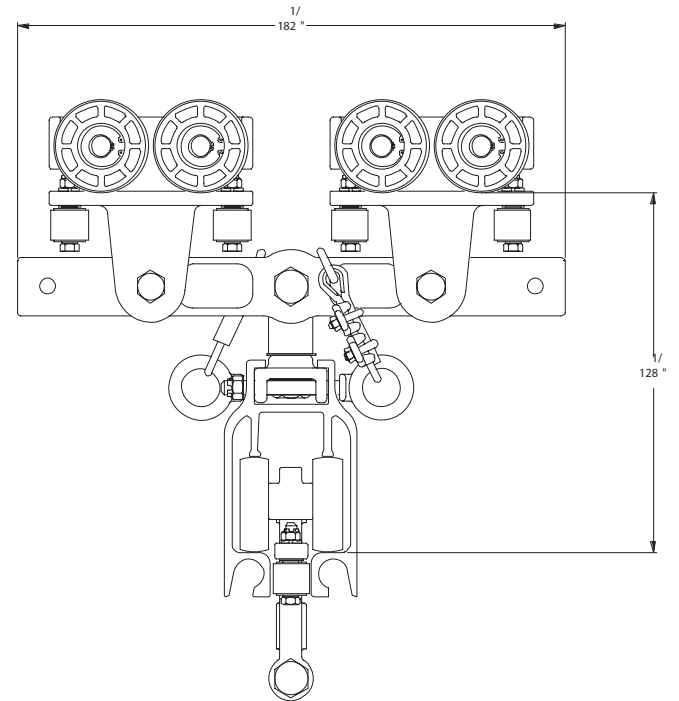


**A-530 STANDARD END TRUCK**

(22051)

DUAL TROLLEY END TRUCK CARRIER AT EACH END OF CRANE GIRDER.  
 RATED LOADS OF 2000 LBS. (896 KGS)  
 SINGLE GIRDER BRIDGE CRANE UP TO 20'-0"

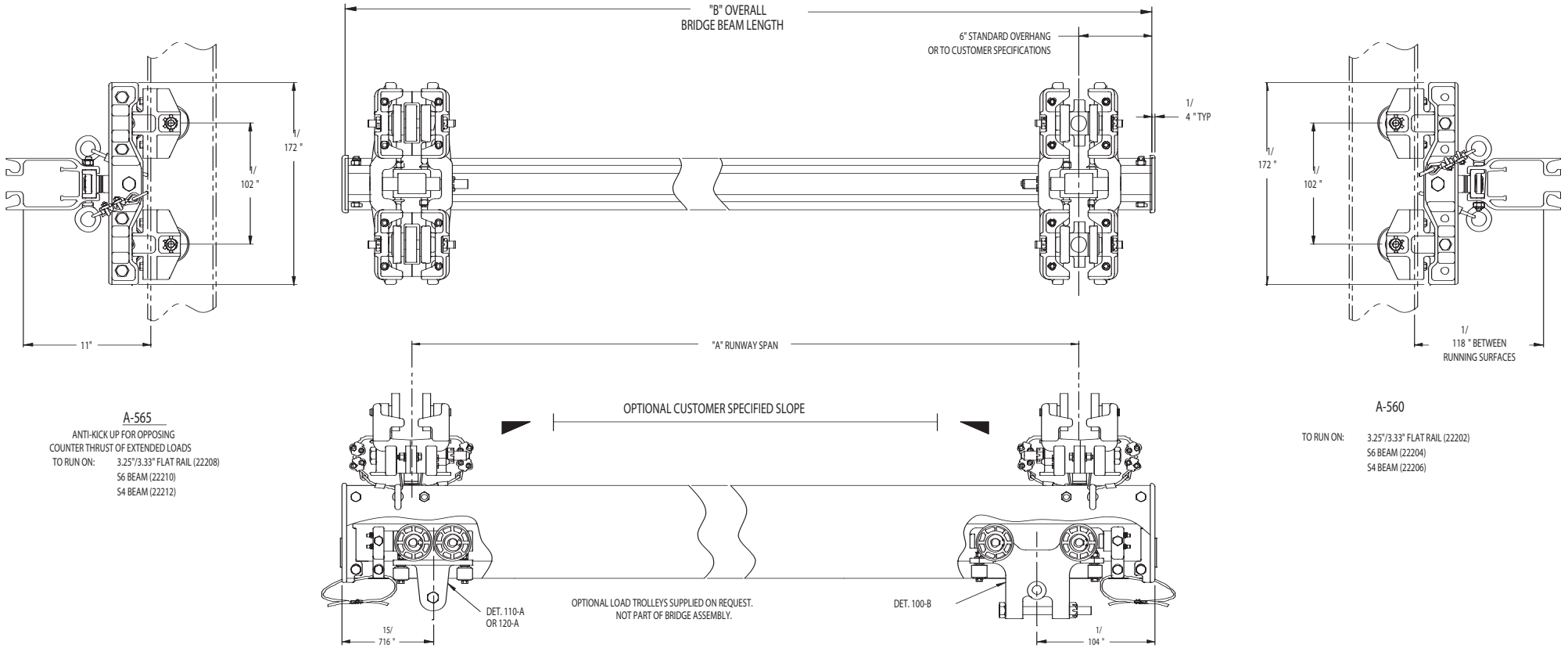
[6096] SPAN.



**A-540 STANDARD END TRUCK**

(22071)

DUAL TROLLEY END TRUCK CARRIER AT EACH END OF CRANE GIRDER.  
 RATED LOADS OF 2000 LBS. (896 KGS)  
 USED IN PAIRS WITH CONNECTING LINK FOR RATED LOADS UP TO 4000 LBS. (1792 KGS) SPANS UP TO 20'-0" [6096]



"A" SPAN		"B" OVERALL		RATED LOAD		TEST LOAD		TOTAL WEIGHT	
2'-0"	609.6 mm	3'-0"	914.4 mm	1000 lbs.	453 Kgs	1250 lbs.	567 Kgs	86 lbs.	39 Kgs
3'-0"	914.4 mm	4'-0"	1219.2 mm	1000 lbs.	453 Kgs	1250 lbs.	567 Kgs	95 lbs.	43 Kgs
4'-0"	1219.2 mm	5'-0"	1524.0 mm	1000 lbs.	453 Kgs	1250 lbs.	567 Kgs	104 lbs.	47.2 Kgs
5'-0"	1524.0 mm	6'-0"	1828.8 mm	1000 lbs.	453 Kgs	1250 lbs.	567 Kgs	113 lbs.	51.2 Kgs
6'-0"	1828.8 mm	7'-0"	2133.6 mm	1000 lbs.	453 Kgs	1250 lbs.	567 Kgs	122 lbs.	55.3 Kgs
7'-0"	2133.6 mm	8'-0"	2438.4 mm	1000 lbs.	453 Kgs	1250 lbs.	567 Kgs	131 lbs.	59.4 Kgs
8'-0"	2438.4 mm	9'-0"	2743.2 mm	1000 lbs.	453 Kgs	1250 lbs.	567 Kgs	140 lbs.	63.5 Kgs
9'-0"	2743.2 mm	10'-0"	3048.0 mm	1000 lbs.	453 Kgs	1250 lbs.	567 Kgs	149 lbs.	67.6 Kgs
10'-0"	3048.0 mm	11'-0"	3352.8 mm	1000 lbs.	453 Kgs	1250 lbs.	567 Kgs	158 lbs.	71.7 Kgs
11'-0"	3352.8 mm	12'-0"	3657.6 mm	1000 lbs.	453 Kgs	1250 lbs.	567 Kgs	167 lbs.	75.7 Kgs
12'-0"	3657.6 mm	13'-0"	3962.4 mm	1000 lbs.	453 Kgs	1250 lbs.	567 Kgs	176 lbs.	79.8 Kgs

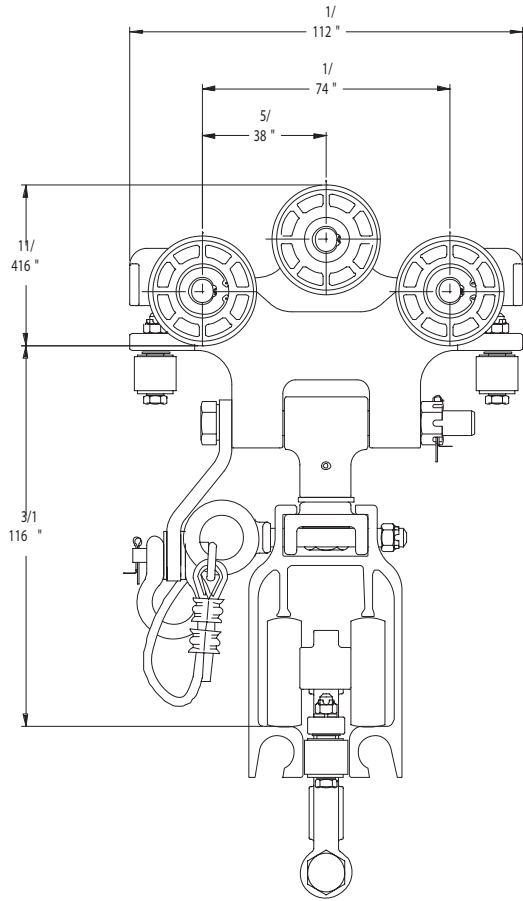
RATED LOAD: BASED UPON STATIC LOAD TESTING, CARRYING CAPACITY OF HIGH IMPACT NYLON WHEELS AND ALSO A BRIDGE GIRDER DEFLECTION OF 1/550.

TEST LOAD: SHALL NOT BE MORE THAN 125% OF THE RATED LOAD UNLESS RECOMMENDED BY THE MANUFACTURER. CRANE SHALL NOT BE LOADED BEYOND ITS RATED LOAD CAPACITY EXCEPT FOR TEST PURPOSES.

TOTAL WEIGHT: FOR BRIDGE CRANE ASSEMBLIES INCLUDING END TRUCK TROLLEYS. EXCLUDING LOAD SUSPENSION TROLLEYS.

NOTE: DIAGONAL BRACING ON BRIDGE CRANE MAY BE NECESSARY FOR CERTAIN APPLICATIONS.

VALUES CONFORM WITH U.S.H.A. DEPT. OF LABOR FEDERAL REGULATIONS CODE. FEDERAL REGULATIONS CODE WAS REVISED AS OF JULY 1, 1984.



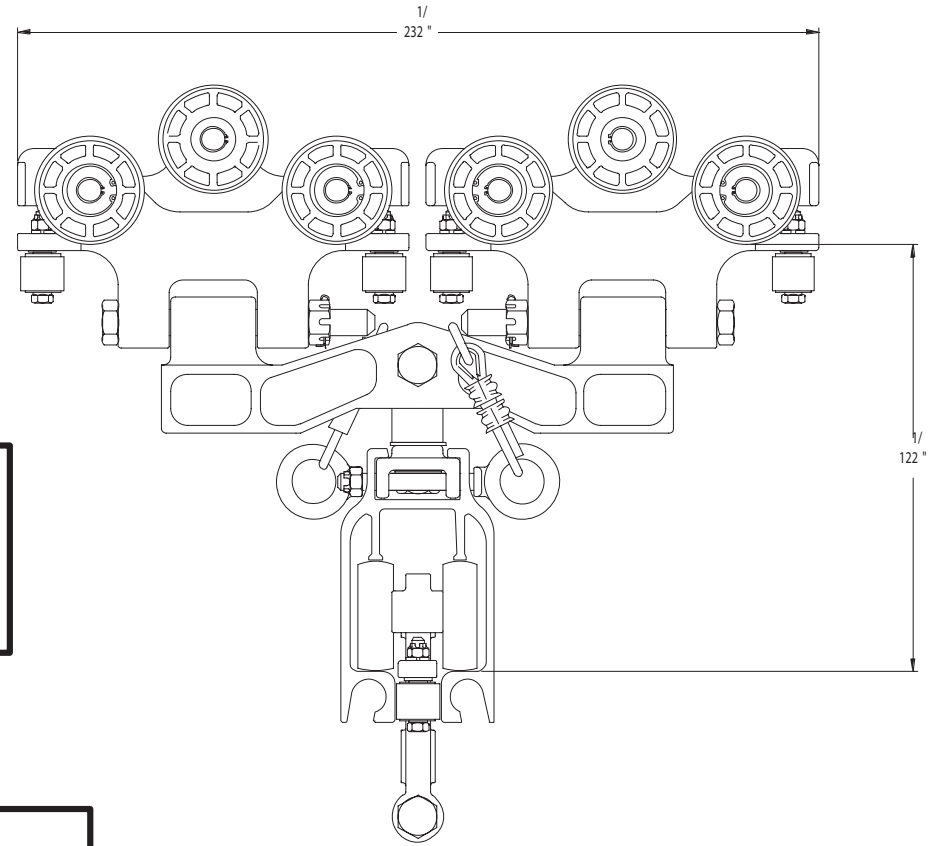
**A-522**  
(22111)  
ANTI KICKUP END TRUCK  
SINGLE TROLLEY CARRIER  
RATED LOAD 1000 LBS.

**UNIVERSAL CARRIER SPECIFICATIONS:**  
 WEIGHT: 7.0 LBS.  
 BODY: HIGH TENSILE ALMAG  
 WHEELS: 3.2" DIA. HIGH IMPACT PLASTIC  
 BEARINGS: BALL, PERMANENTLY LUBRICATED  
 STUDS: 5/8" DIA.  
 GUIDE ROLLERS: 1 1/4" DIA. HIGH IMPACT PLASTIC.  
 DUAL RACE BALL BEARING

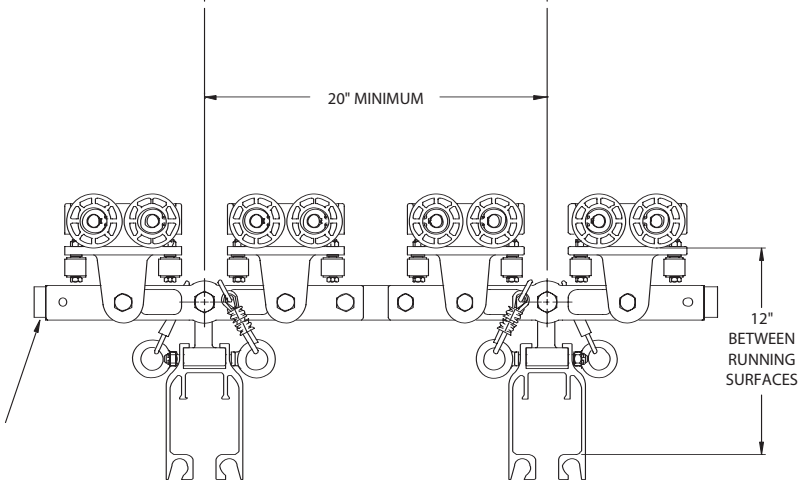
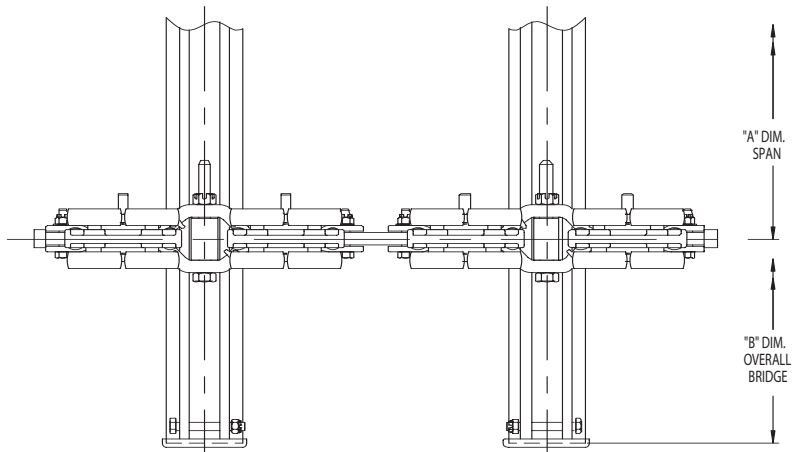
**LABORATORY TESTING DATA:**  
 YIELD STRENGTH: 14,000 LBS.  
 ULTIMATE STRENGTH, TENSILE: 17,625 LBS.

**DIELECTRIC TEST PER ASTM SPECIFICATIONS D-149**  
 CARRIER ASSEMBLY: 5000V.AC WITHOUT CURRENT LEAKAGE (5.00 MIN.)  
 TEST EQUIPMENT: HIGH VOLTAGE DIELECTRIC TESTER  
 HIPOTRONICS MODEL 750-2.SERIES 6664-00

OPERATING TEMP. AT 100% LOAD: -10<sup>oo</sup> TO +110<sup>oo</sup> F.  
 ROLLING FRICTION: 1-2% UNDER LOAD  
 MAX. LOAD EACH WHEEL 250 LBS.



**A-532**  
(22131)  
ANTI KICKUP END TRUCK  
DUAL TROLLEY CARRIER  
RATED LOAD 2000 LBS.



NEOPRENE END STOP (OPTIONAL)

**550A END TRUCK**

(22081)

QUAD. END TRUCK ASS'Y

RATED LOAD: 3000 LBS. [1344 Kgs]

RATED LOAD: BASED UPON STATIC LOAD TESTING, CARRYING CAPACITY OF HIGH IMPACT NYLON WHEELS AND ALSO A BRIDGE GIRDER DEFLECTION OF 1/550.

TEST LOAD: SHALL NOT BE MORE THAN 125% OF THE RATED LOAD UNLESS RECOMMENDED BY THE MANUFACTURER. CRANE SHALL NOT BE LOADED BEYOND IT'S RATED LOAD CAPACITY EXCEPT FOR TEST PURPOSES.

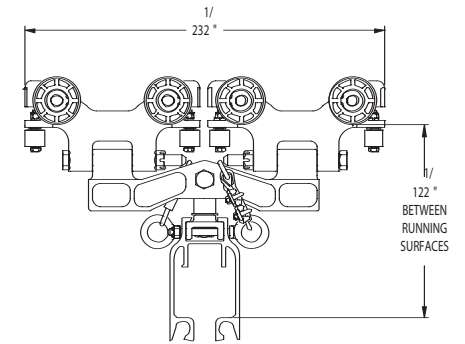
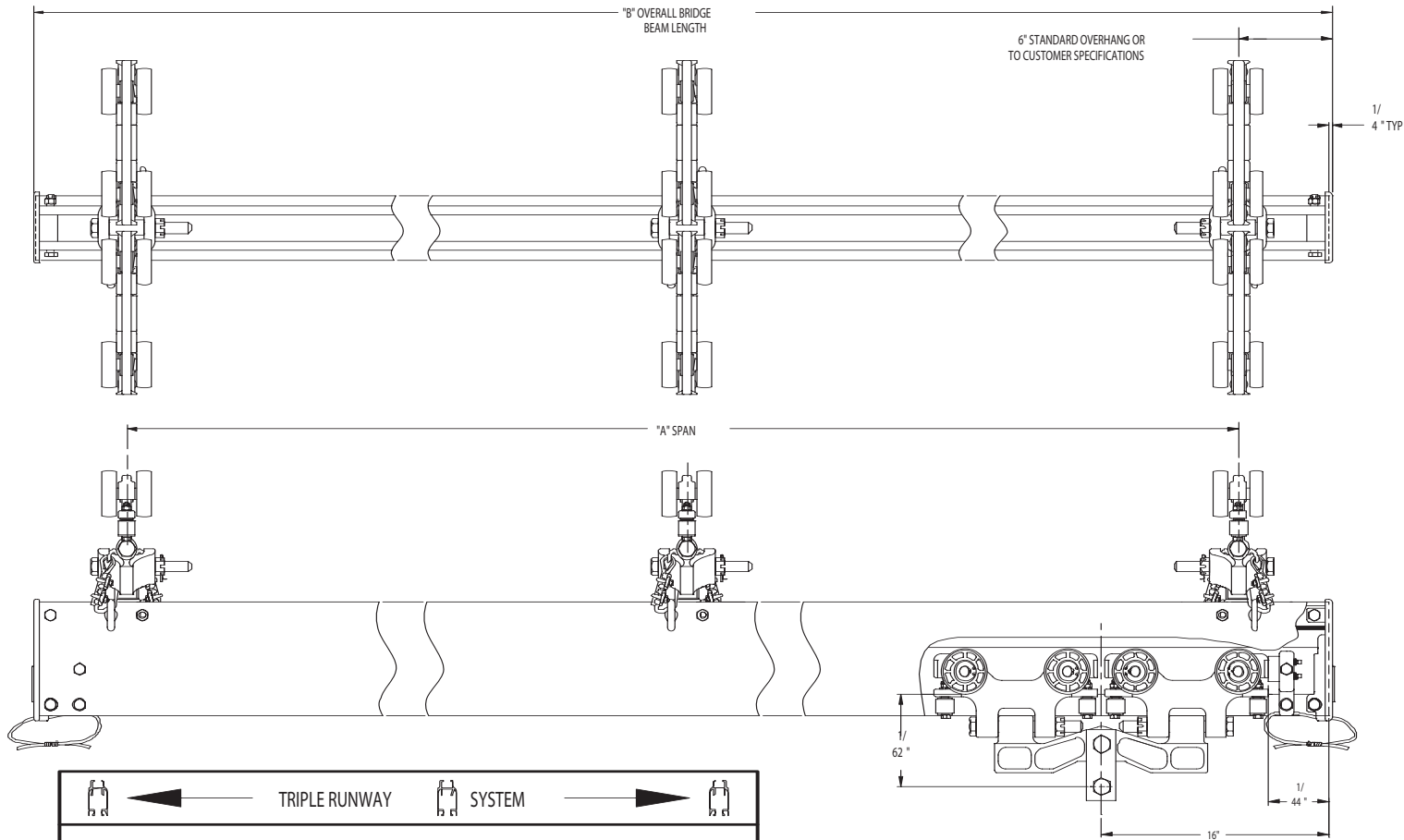
TOTAL WEIGHT: FOR BRIDGE CRANE ASSEMBLIES INCLUDING END TRUCK TROLLEYS. EXCLUDING LOAD SUSPENSION TROLLEYS.

NOTE: DIAGONAL BRACING ON BRIDGE CRANE MAY BE NECESSARY FOR CERTAIN APPLICATIONS.

DUAL RUNWAY SYSTEM									
ETA-X DOUBLE GIRDER BRIDGE									
A-550 QUAD END TRUCK 43" [1092.2] LONG									
"A" SPAN	"B" OVERALL	RATED LOAD		TEST LOAD		TOTAL WEIGHT			
5'-0"	1524.0 mm	6'-0"	1828.8 mm	4000 LBS.	1814 Kgs	5000 LBS.	2268 Kgs	227 LBS.	102.9 Kgs
6'-0"	1828.8 mm	7'-0"	2133.6 mm	4000 LBS.	1814 Kgs	5000 LBS.	2268 Kgs	244 LBS.	110.6 Kgs
7'-0"	2133.6 mm	8'-0"	2438.4 mm	4000 LBS.	1814 Kgs	5000 LBS.	2268 Kgs	263 LBS.	119.3 Kgs
8'-0"	2438.4 mm	9'-0"	2743.2 mm	4000 LBS.	1814 Kgs	5000 LBS.	2268 Kgs	281 LBS.	127.4 Kgs
9'-0"	2743.2 mm	10'-0"	3048.0 mm	4000 LBS.	1814 Kgs	5000 LBS.	2268 Kgs	299 LBS.	135.6 Kgs
10'-0"	3048.0 mm	11'-0"	3352.8 mm	4000 LBS.	1814 Kgs	5000 LBS.	2268 Kgs	317 LBS.	143.8 Kgs
11'-0"	3352.8 mm	12'-0"	3657.6 mm	4000 LBS.	1814 Kgs	5000 LBS.	2268 Kgs	335 LBS.	151.9 Kgs
12'-0"	3657.6 mm	13'-0"	3962.4 mm	3962 LBS.	1797 Kgs	4952 LBS.	2246 Kgs	353 LBS.	160 Kgs
13'-0"	3962.4 mm	14'-0"	4267.2 mm	3344 LBS.	1517 Kgs	4180 LBS.	1896 Kgs	371 LBS.	168.3 Kgs
14'-0"	4267.2 mm	15'-0"	4572.0 mm	2850 LBS.	1293 Kgs	3562 LBS.	1616 Kgs	389 LBS.	176.4 Kgs
15'-0"	4572.0 mm	16'-0"	4876.8 mm	2450 LBS.	1111 Kgs	3062 LBS.	1389 Kgs	407 LBS.	184.6 Kgs
16'-0"	4876.8 mm	17'-0"	5181.6 mm	2122 LBS.	962 Kgs	2652 LBS.	1203 Kgs	425 LBS.	192.8 Kgs
17'-0"	5181.6 mm	18'-0"	5486.4 mm	1846 LBS.	837 Kgs	2307 LBS.	1047 Kgs	443 LBS.	200.9 Kgs
18'-0"	5486.4 mm	19'-0"	5791.2 mm	1614 LBS.	732 Kgs	2017 LBS.	915 Kgs	461 LBS.	209 Kgs
19'-0"	5791.2 mm	20'-0"	6096.0 mm	1416 LBS.	642 Kgs	1770 LBS.	803 Kgs	479 LBS.	217.3 Kgs
20'-0"	6096.0 mm	21'-0"	6400.8 mm	1250 LBS.	560 Kgs	1563 LBS.	700.2 Kgs	497 LBS.	225.4 Kgs

TRIPLE RUNWAY SYSTEM									
ETA-X DOUBLE GIRDER BRIDGE									
A-550 QUAD END TRUCK 43" [1092.2] LONG									
"A" SPAN x 2	"B" OVERALL	RATED LOAD		TEST LOAD		TOTAL WEIGHT			
2'-6"	762.0 mm	6'-0"	2133.6 mm	4000 LBS.	1814 Kgs	5000 LBS.	2268 Kgs	246 LBS.	110.2 Kgs
3'-0"	914.4 mm	7'-0"	2438.4 mm	4000 LBS.	1814 Kgs	5000 LBS.	2268 Kgs	288 LBS.	130.6 Kgs
3'-6"	1066.8 mm	8'-0"	2743.2 mm	4000 LBS.	1814 Kgs	5000 LBS.	2268 Kgs	306 LBS.	138.8 Kgs
4'-0"	1219.2 mm	9'-0"	3048.0 mm	4000 LBS.	1814 Kgs	5000 LBS.	2268 Kgs	324 LBS.	147 Kgs
4'-6"	1371.6 mm	10'-0"	3352.8 mm	4000 LBS.	1814 Kgs	5000 LBS.	2268 Kgs	342 LBS.	155 Kgs
5'-0"	1524.0 mm	11'-0"	3657.6 mm	4000 LBS.	1814 Kgs	5000 LBS.	2268 Kgs	360 LBS.	163.3 Kgs
5'-6"	1676.4 mm	12'-0"	3962.4 mm	4000 LBS.	1814 Kgs	5000 LBS.	2268 Kgs	378 LBS.	171.4 Kgs
6'-0"	1828.8 mm	13'-0"	4267.2 mm	4000 LBS.	1814 Kgs	5000 LBS.	2268 Kgs	396 LBS.	179.6 Kgs
6'-6"	1981.2 mm	14'-0"	4572.0 mm	4000 LBS.	1814 Kgs	5000 LBS.	2268 Kgs	414 LBS.	187.8 Kgs
7'-0"	2133.6 mm	15'-0"	4876.8 mm	4000 LBS.	1814 Kgs	5000 LBS.	2268 Kgs	432 LBS.	196 Kgs
7'-6"	2286.0 mm	16'-0"	5181.6 mm	4000 LBS.	1814 Kgs	5000 LBS.	2268 Kgs	450 LBS.	204 Kgs
8'-0"	2438.4 mm	17'-0"	5486.4 mm	4000 LBS.	1814 Kgs	5000 LBS.	2268 Kgs	468 LBS.	212.3 Kgs
8'-6"	2590.8 mm	18'-0"	5791.2 mm	4000 LBS.	1814 Kgs	5000 LBS.	2268 Kgs	486 LBS.	220.4 Kgs
9'-0"	2743.2 mm	19'-0"	6096.0 mm	4000 LBS.	1814 Kgs	5000 LBS.	2268 Kgs	504 LBS.	228.6 Kgs
9'-6"	2895.6 mm	20'-0"	6400.8 mm	4000 LBS.	1814 Kgs	5000 LBS.	2268 Kgs	522 LBS.	236.8 Kgs
10'-0"	3048.0 mm	21'-0"	6705.6 mm	4000 LBS.	1814 Kgs	5000 LBS.	2268 Kgs	540 LBS.	244.9 Kgs

VALUES CONFORM WITH O.S.H.A. DEPT. OF LABOR; FEDERAL REGULATIONS CODE WAS REVISED AS OF JULY 1, 1984.



A-530  
(22051)  
DUAL CARRIER END TRUCK  
2000 LBS. (896 Kgs) RATED LOAD.

OPTIONAL 150-A LOAD BAR  
WITH CLEVIS  
(25120)

RATED LOAD: BASED UPON STATIC LOAD TESTING, CARRYING CAPACITY OF HIGH IMPACT PLASTIC WHEELS AND ALSO A BRIDGE GIRDER DEFLECTION OF 1/550.

TEST LOAD: SHALL NOT BE MORE THAN 125% OF THE RATED LOAD UNLESS RECOMMENDED BY THE MANUFACTURER. CRANE SHALL NOT BE LOADED BEYOND ITS RATED LOAD CAPACITY EXCEPT FOR TEST PURPOSES.

WEIGHT COMPLETE: FOR BRIDGE CRANE ASSEMBLIES INCLUDING END TRUCK TROLLEYS, EXCLUDING LOAD SUSPENSION TROLLEYS.

NOTE: DIAGONAL BRACING ON BRIDGE CRANE MAY BE NECESSARY FOR CERTAIN APPLICATIONS.

VALUES CONFORM WITH O.S.H.A. DEPT. OF LABOR FEDERAL REGULATIONS CODE. FEDERAL REGULATIONS CODE WAS REVISED AS OF JULY 1, 1984.

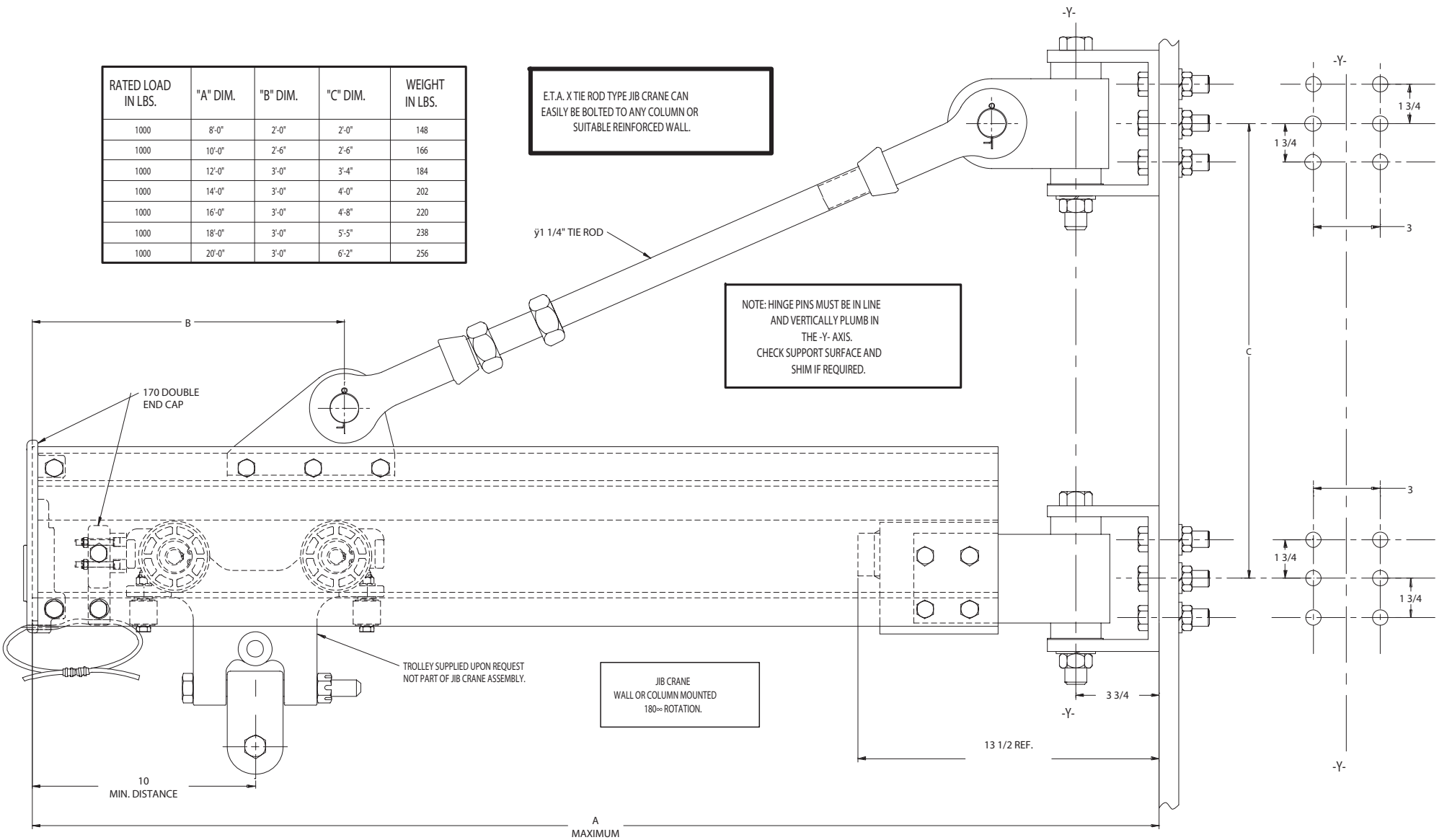
ETA-X SINGLE GIRDER BRIDGE									
A-530 DUAL CARRIER END TRUCK 24" [609.6]									
"A" SPAN x 2	"B" OVERALL	RATED LOAD		TEST LOAD		TOTAL WEIGHT			
2'-6"	762.0 mm	6'-0"	1828.8 mm	2000 LBS.	907 Kgs	2500 LBS.	1134 Kgs	131 LBS.	57 Kgs
3'-0"	914.4 mm	7'-0"	2133.6 mm	2000 LBS.	907 Kgs	2500 LBS.	1134 Kgs	140 LBS.	61 Kgs
3'-6"	1066.8 mm	8'-0"	2438.4 mm	2000 LBS.	907 Kgs	2500 LBS.	1134 Kgs	149 LBS.	64.9 Kgs
4'-0"	1219.2 mm	9'-0"	2743.2 mm	2000 LBS.	907 Kgs	2500 LBS.	1134 Kgs	158 LBS.	68.9 Kgs
4'-6"	1371.6 mm	10'-0"	3048.0 mm	2000 LBS.	907 Kgs	2500 LBS.	1134 Kgs	167 LBS.	72.8 Kgs
5'-0"	1524.0 mm	11'-0"	3352.8 mm	2000 LBS.	907 Kgs	2500 LBS.	1134 Kgs	176 LBS.	76.7 Kgs
5'-6"	1676.4 mm	12'-0"	3657.6 mm	2000 LBS.	907 Kgs	2500 LBS.	1134 Kgs	185 LBS.	80.6 Kgs
6'-0"	1828.8 mm	13'-0"	3962.4 mm	2000 LBS.	907 Kgs	2500 LBS.	1134 Kgs	194 LBS.	84.6 Kgs
6'-6"	1981.2 mm	14'-0"	4267.2 mm	2000 LBS.	907 Kgs	2500 LBS.	1134 Kgs	203 LBS.	88.5 Kgs
7'-0"	2133.6 mm	15'-0"	4572.0 mm	2000 LBS.	907 Kgs	2500 LBS.	1134 Kgs	212 LBS.	92.4 Kgs
7'-6"	2286.0 mm	16'-0"	4876.8 mm	2000 LBS.	907 Kgs	2500 LBS.	1134 Kgs	221 LBS.	96.3 Kgs
8'-0"	2438.4 mm	17'-0"	5181.6 mm	2000 LBS.	907 Kgs	2500 LBS.	1134 Kgs	230 LBS.	100.3 Kgs
8'-6"	2590.8 mm	18'-0"	5486.4 mm	2000 LBS.	907 Kgs	2500 LBS.	1134 Kgs	239 LBS.	90.9 Kgs
9'-0"	2743.2 mm	19'-0"	5791.2 mm	2000 LBS.	907 Kgs	2500 LBS.	1134 Kgs	248 LBS.	104.2 Kgs
9'-6"	2895.6 mm	20'-0"	6096.0 mm	2000 LBS.	907 Kgs	2500 LBS.	1134 Kgs	257 LBS.	112 Kgs
10'-0"	3048.0 mm	21'-0"	6705.6 mm	2000 LBS.	907 Kgs	2500 LBS.	1134 Kgs	266 LBS.	115.9 Kgs

RATED LOAD IN LBS.	"A" DIM.	"B" DIM.	"C" DIM.	WEIGHT IN LBS.
1000	8'-0"	2'-0"	2'-0"	148
1000	10'-0"	2'-6"	2'-6"	166
1000	12'-0"	3'-0"	3'-4"	184
1000	14'-0"	3'-0"	4'-0"	202
1000	16'-0"	3'-0"	4'-8"	220
1000	18'-0"	3'-0"	5'-5"	238
1000	20'-0"	3'-0"	6'-2"	256

E.T.A. X TIE ROD TYPE JIB CRANE CAN EASILY BE BOLTED TO ANY COLUMN OR SUITABLE REINFORCED WALL.

Ø 1 1/4" TIE ROD

NOTE: HINGE PINS MUST BE IN LINE AND VERTICALLY PLUMB IN THE -Y- AXIS. CHECK SUPPORT SURFACE AND SHIM IF REQUIRED.



170 DOUBLE END CAP

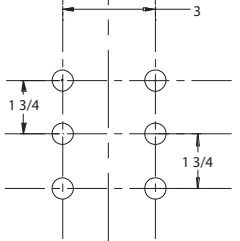
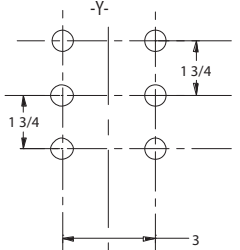
TROLLEY SUPPLIED UPON REQUEST NOT PART OF JIB CRANE ASSEMBLY.

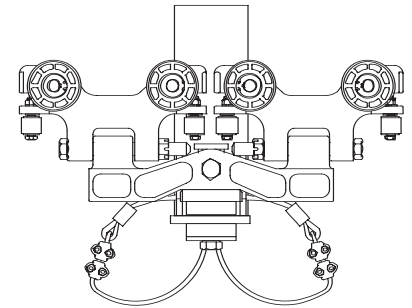
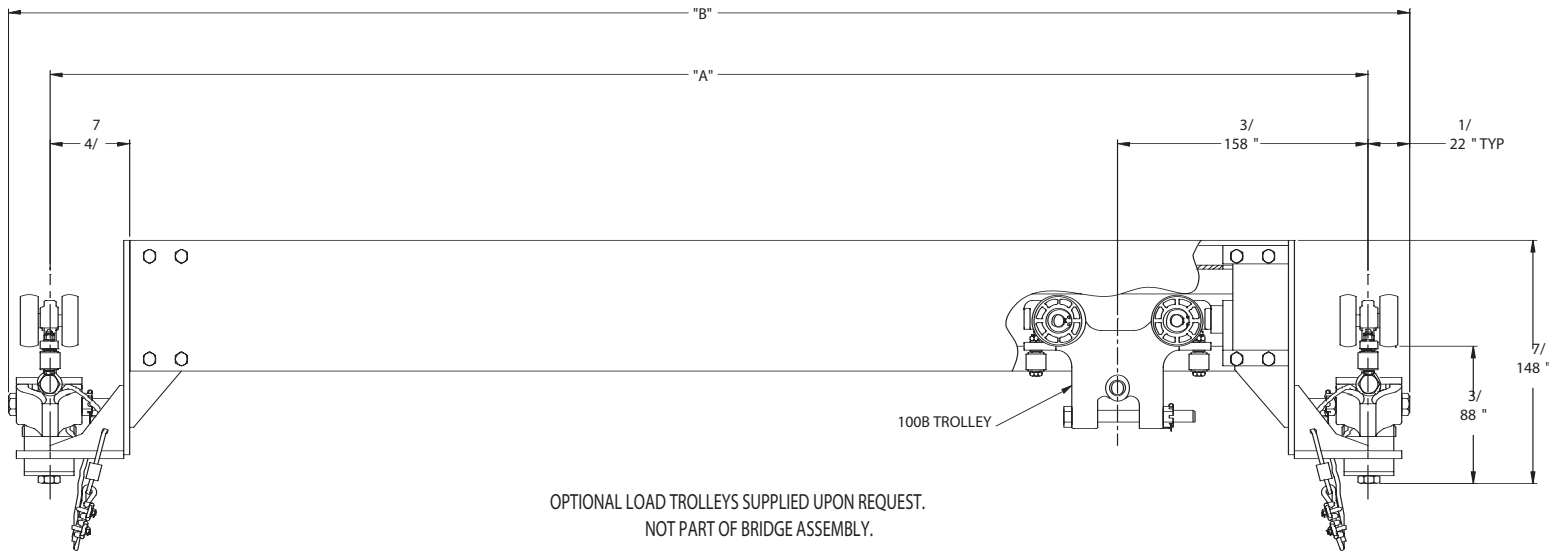
JIB CRANE WALL OR COLUMN MOUNTED 180° ROTATION.

13 1/2 REF.

-Y-

-Y-





"A" SPAN		"B" OVERALL		RATED LOAD		TEST LOAD	
2'-0"	609.6 mm	2'-5"	736.6 mm	2000 lbs.	907 Kgs	2500 lbs.	1134 Kgs
3'-0"	914.4 mm	3'-5"	1041.1 mm	2000 lbs.	907 Kgs	2500 lbs.	1134 Kgs
4'-0"	1219.2 mm	4'-5"	1346.2 mm	2000 lbs.	907 Kgs	2500 lbs.	1134 Kgs
5'-0"	1524.0 mm	5'-5"	1651 mm	2000 lbs.	907 Kgs	2500 lbs.	1134 Kgs
6'-0"	1828.8 mm	6'-5"	1955.8 mm	2000 lbs.	907 Kgs	2500 lbs.	1134 Kgs
7'-0"	2133.6 mm	7'-5"	2260.6 mm	2000 lbs.	907 Kgs	2500 lbs.	1134 Kgs
8'-0"	2438.4 mm	8'-5"	2565.4 mm	2000 lbs.	907 Kgs	2500 lbs.	1134 Kgs
9'-0"	2743.2 mm	9'-5"	2870.2 mm	2000 lbs.	907 Kgs	2500 lbs.	1134 Kgs
10'-0"	3048.0 mm	10'-5"	3175 mm	2000 lbs.	907 Kgs	2500 lbs.	1134 Kgs
11'-0"	3352.8 mm	11'-5"	3479.8 mm	2000 lbs.	907 Kgs	2500 lbs.	1134 Kgs
12'-0"	3657.6 mm	12'-5"	3784.6 mm	2000 lbs.	907 Kgs	2500 lbs.	1134 Kgs
13'-0"	3962.4 mm	13'-5"	4089.4 mm	2000 lbs.	907 Kgs	2500 lbs.	1134 Kgs
14'-0"	4267.2 mm	14'-5"	4394.2 mm	1975 lbs.	896 Kgs	2469 lbs.	1120 Kgs
15'-0"	4572.0 mm	15'-5"	4699 mm	1650 lbs.	748 Kgs	2062 lbs.	935 Kgs
16'-0"	4876.8 mm	16'-5"	5003.8 mm	1400 lbs.	635 Kgs	1750 lbs.	794 Kgs
17'-0"	5181.6 mm	17'-5"	5308.6 mm	1175 lbs.	533 Kgs	1469 lbs.	666 Kgs
18'-0"	5486.4 mm	18'-5"	5613.4 mm	1000 lbs.	453 Kgs	1250 lbs.	567 Kgs
19'-0"	5791.2 mm	19'-5"	5918.2 mm	875 lbs.	397 Kgs	1094 lbs.	496 Kgs
20'-0"	6096.0 mm	20'-5"	6223 mm	750 lbs.	340 Kgs	937 lbs.	425 Kgs

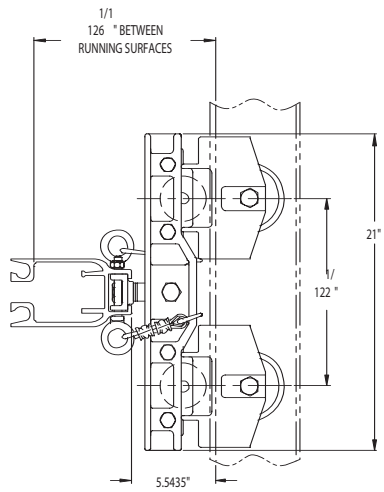
RATED LOAD: BASED UPON STATIC LOAD TESTING, CARRYING CAPACITY OF HIGH IMPACT NYLON WHEELS AND ALSO A BRIDGE GIRDER DEFLECTION OF 1/550.

TEST LOAD: SHALL NOT BE MORE THAN 125% OF THE RATED LOAD UNLESS RECOMMENDED BY THE MANUFACTURER. CRANE SHALL NOT BE LOADED BEYOND IT'S RATED LOAD CAPACITY EXCEPT FOR TEST PURPOSES.

NOTE: DIAGONAL BRACING ON BRIDGE CRANE MAY BE NECESSARY FOR CERTAIN APPLICATIONS.

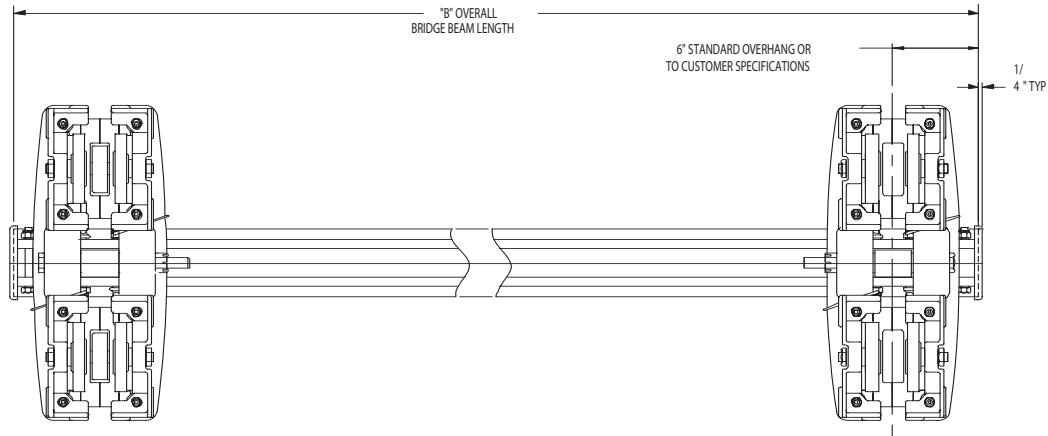
VALUES CONFORM WITH O.S.H.A. DEPT. OF LABOR FEDERAL REGULATIONS CODE. FEDERAL REGULATIONS CODE WAS REVISED AS OF JULY 1, 1984.





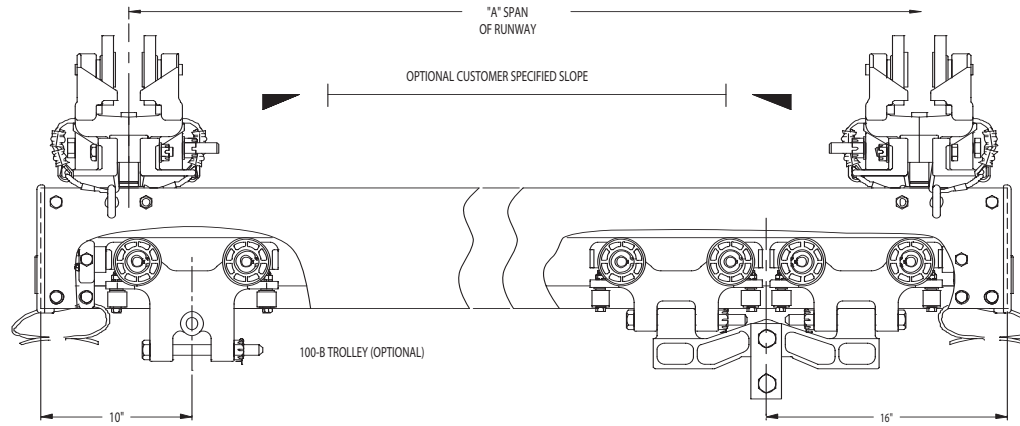
**A-568 END TRUCK**

MBC-1000-3 W/ ANTI KICK-UP WHEEL  
FOR OPPOSING COUNTER THRUST OF  
EXTENDED LOADS. (OPTIONAL) TO RUN ON:  
3.25" OR 3.33" FLAT RAIL (22218)  
56 BEAM (22220)



**A-566 END TRUCK**

MBC-1000-3 W/O ANTI KICK-UP  
WHEEL (STANDARD) TO RUN ON:  
3.25" OR 3.33" FLAT RAIL (22214)  
56 BEAM (22216)



100-B TROLLEY (OPTIONAL)

"A" SPAN		"B" OVERALL		RATED CAPACITY		TEST LOAD		WT. COMPLETE	
2'-0"	609 mm	3'-0"	914 mm	2000 LBS.	907 Kgs	2500 LBS.	1134 Kgs	133 LBS.	60.3 Kgs
3'-0"	914 mm	4'-0"	1219 mm	2000 LBS.	907 Kgs	2500 LBS.	1134 Kgs	142 LBS.	64.4 Kgs
4'-0"	1219 mm	5'-0"	1524 mm	2000 LBS.	907 Kgs	2500 LBS.	1134 Kgs	151 LBS.	68.5 Kgs
5'-0"	1524 mm	6'-0"	1828 mm	2000 LBS.	907 Kgs	2500 LBS.	1134 Kgs	160 LBS.	72.6 Kgs
6'-0"	1828 mm	7'-0"	2133 mm	2000 LBS.	907 Kgs	2500 LBS.	1134 Kgs	169 LBS.	76.6 Kgs
7'-0"	2133 mm	8'-0"	2438 mm	2000 LBS.	907 Kgs	2500 LBS.	1134 Kgs	178 LBS.	80.7 Kgs
8'-0"	2438 mm	9'-0"	2743 mm	2000 LBS.	907 Kgs	2500 LBS.	1134 Kgs	187 LBS.	84.8 Kgs
9'-0"	2743 mm	10'-0"	3048 mm	2000 LBS.	907 Kgs	2500 LBS.	1134 Kgs	196 LBS.	88.9 Kgs
10'-0"	3048 mm	11'-0"	3352 mm	2000 LBS.	907 Kgs	2500 LBS.	1134 Kgs	205 LBS.	93 Kgs
11'-0"	3352 mm	12'-0"	3656 mm	2000 LBS.	907 Kgs	2500 LBS.	1134 Kgs	214 LBS.	97 Kgs
12'-0"	3656 mm	13'-0"	3960 mm	1981 LBS.	898 Kgs	2476 LBS.	1123 Kgs	223 LBS.	101.1 Kgs
3'-0"	960 mm	14'-0"	4264 mm	1672 LBS.	758 Kgs	2090 LBS.	948 Kgs	232 LBS.	105.2 Kgs
4'-0"	1264 mm	15'-0"	4568 mm	1425 LBS.	646 Kgs	1781 LBS.	808 Kgs	241 LBS.	109.3 Kgs
5'-0"	1568 mm	16'-0"	4872 mm	1225 LBS.	555 Kgs	1531 LBS.	694 Kgs	250 LBS.	113.4 Kgs
6'-0"	1872 mm	17'-0"	5176 mm	1061 LBS.	481 Kgs	1326 LBS.	601 Kgs	259 LBS.	117.5 Kgs
7'-0"	2176 mm	18'-0"	5480 mm	924 LBS.	419 Kgs	1155 LBS.	524 Kgs	268 LBS.	121.5 Kgs
8'-0"	2480 mm	19'-0"	5784 mm	807 LBS.	366 Kgs	1009 LBS.	457 Kgs	277 LBS.	125.6 Kgs
9'-0"	2784 mm	20'-0"	6088 mm	708 LBS.	321 Kgs	885 LBS.	401 Kgs	286 LBS.	129.7 Kgs
10'-0"	3088 mm	21'-0"	6392 mm	623 LBS.	282 Kgs	779 LBS.	353 Kgs	295 LBS.	133.8 Kgs

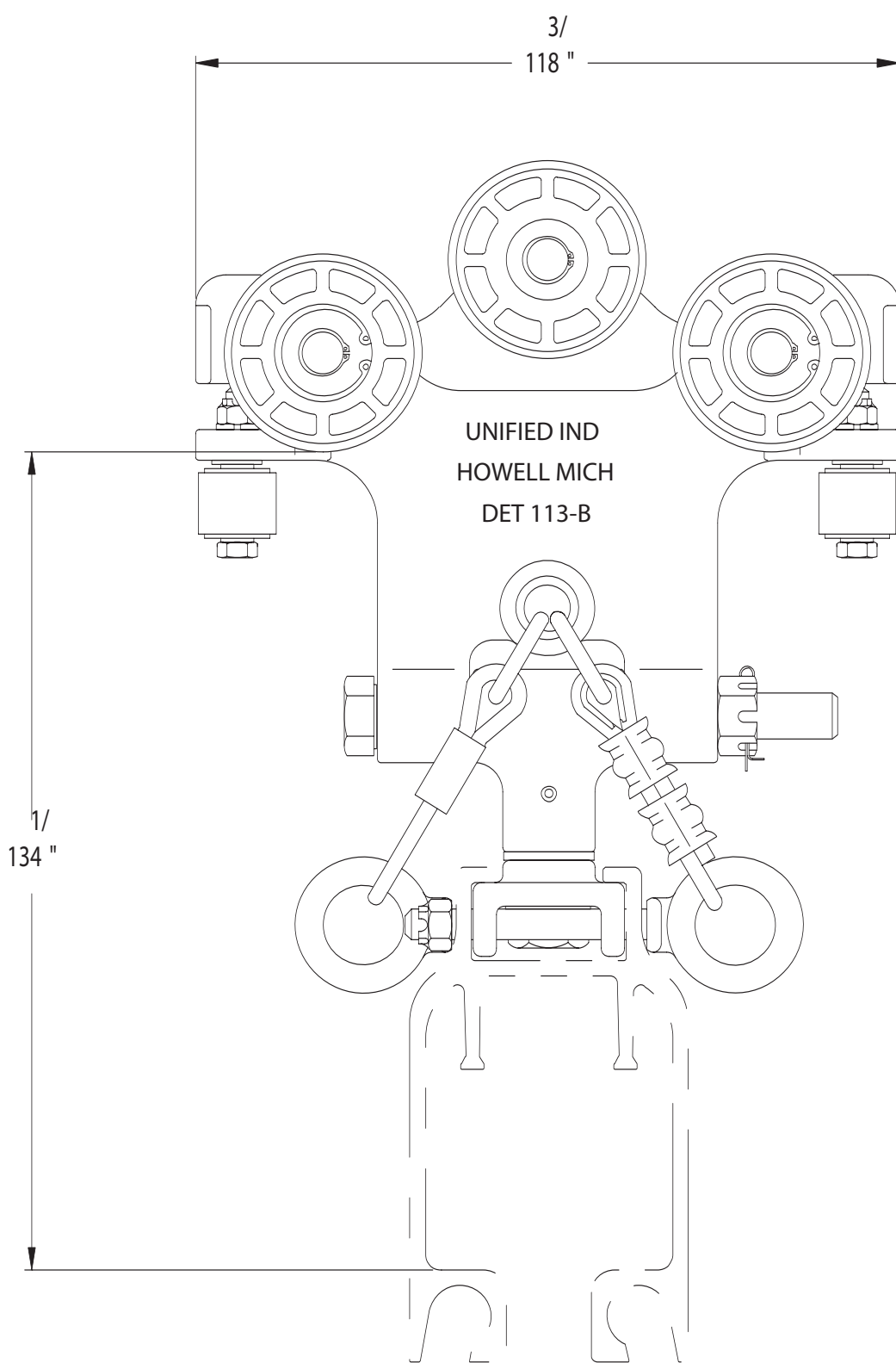
OPTIONAL 150-A LOAD BAR W/ CLEVIS

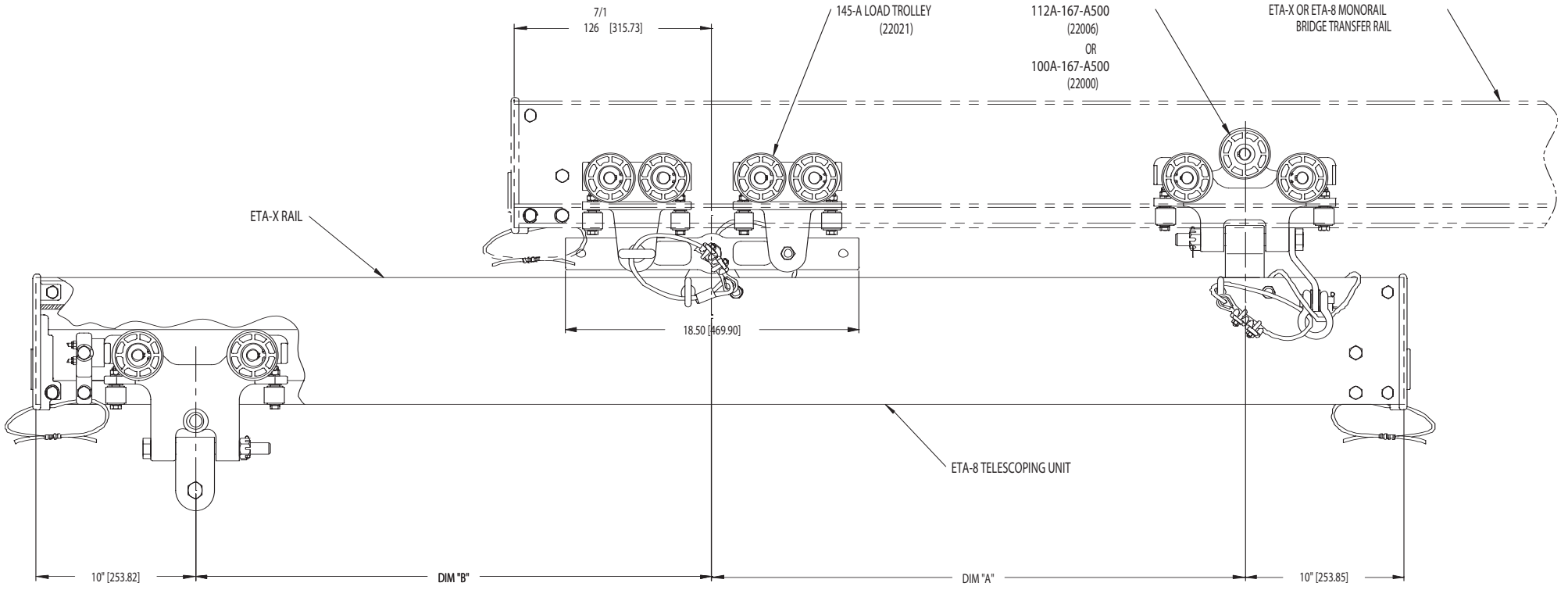
RATED LOADS: BASED UPON STATIC LOAD OF END TRUCK  
TROLLEYS, END TRUCKS AND BRIDGE GIRDER DEFLECTION OF 1/550  
TEST LOAD: SHALL NOT BE MORE THAN 125% OF THE  
RATED LOAD UNLESS RECOMMENDED BY THE MANUFACTURER.  
CRANE SHALL NOT BE LOADED BEYOND IT'S RATED LOAD  
CAPACITY EXCEPT FOR TEST PURPOSES.  
TOTAL WEIGHT: FOR BRIDGE CRANE ASSEMBLIES INCLUDING  
END TRUCK TROLLEYS. EXCLUDING LOAD SUSPENSION TROLLEYS.

SEE OUR FULL LINE OF MBC-1000-3  
CARRIER TROLLEYS FOR A VARIETY OF  
FLANGE TYPES.

NOTE: DIAGONAL BRACING ELIMINATES  
SELF-ALIGNING FEATURE

VALUES CONFORM WITH O.S.H.A. DEPT. OF LABOR  
FEDERAL REGULATIONS CODE WAS REVISED AS OF JULY 1, 1984.





ANTI-KICKUP TELESCOPING UNITS AVAILABLE FOR EXTENDED LIGHT LOADS

NOTE: FOR HEAVY RATED LOAD TELESCOPING CONSULT FACTORY

ETA-8 BRIDGE TRANSFER RAIL

(NOT SHOWN)

(SHOWN)

"A"	100A LOAD TROLLEY "B"			145A LOAD TROLLEY "B"		
	24"	36"	48"	36"	48"	60"
18"	420	330	250	550	400	340
24"	500	400	330	700	550	450
30"	600	450	380	850	650	500
36"	650	500	400	1000	650	475
48"	700	600	500	850	575	425

EXTENDED LOAD RATINGS IN LBS.

ETA-X BRIDGE TRANSFER RAIL WITH 100A-167-A500 END TRUCK IN BACK

(NOT SHOWN)

(SHOWN)

"A"	100A LOAD TROLLEY "B"			145A LOAD TROLLEY "B"		
	24"	36"	48"	36"	48"	60"
18"	450	350	300	550	400	340
24"	550	450	400	700	550	450
30"	600	500	450	850	650	500
36"	650	575	500	1000	650	475
48"	700	650	550	850	575	425

EXTENDED LOAD RATINGS IN LBS.

ETA-X BRIDGE TRANSFER RAIL WITH 145A END TRUCKS FRONT & BACK

"A"	145A LOAD TROLLEY "B"		
	36"	48"	60"
24"	850	700	525
30"	950	700	500
36"	1000	650	475
48"	850	575	425
60"	750	525	380

# CAUTION

This bridge crane has a safe load rating, which has been clearly marked on both sides by the manufacturer. The total weight of the suspended load should never exceed 100% of this limit. The weight of all handling devices such as buckets, magnets, grabs, balancers, hoists, weldguns, etc. must be included as a part of the suspended load. The weight of such devices should therefore be determined and clearly marked.

Consideration should be given when installing hoisting devices. Load ratings for such devices may exceed the load rating of the bridge crane.

The operator should inspect this bridge crane for loose bolts and worn, cracked or distorted parts prior to use (inspection should include all handling devices and mounting equipment). Defective parts should be replaced with manufacturer-approved parts before use of bridge crane is resumed.

This bridge crane conforms to the safety standards of the U.S. Occupational Safety and Health Administration (OSHA). Any alteration of its structure or change in its rated load capacity may render null and void any manufacturer's warranties, expressed or implied.

Ref: Code of Federal Regulations,  
U.S. Labor Dept. Book #29,  
Parts 1900 to 1910.  
Revised as of July, 1984.